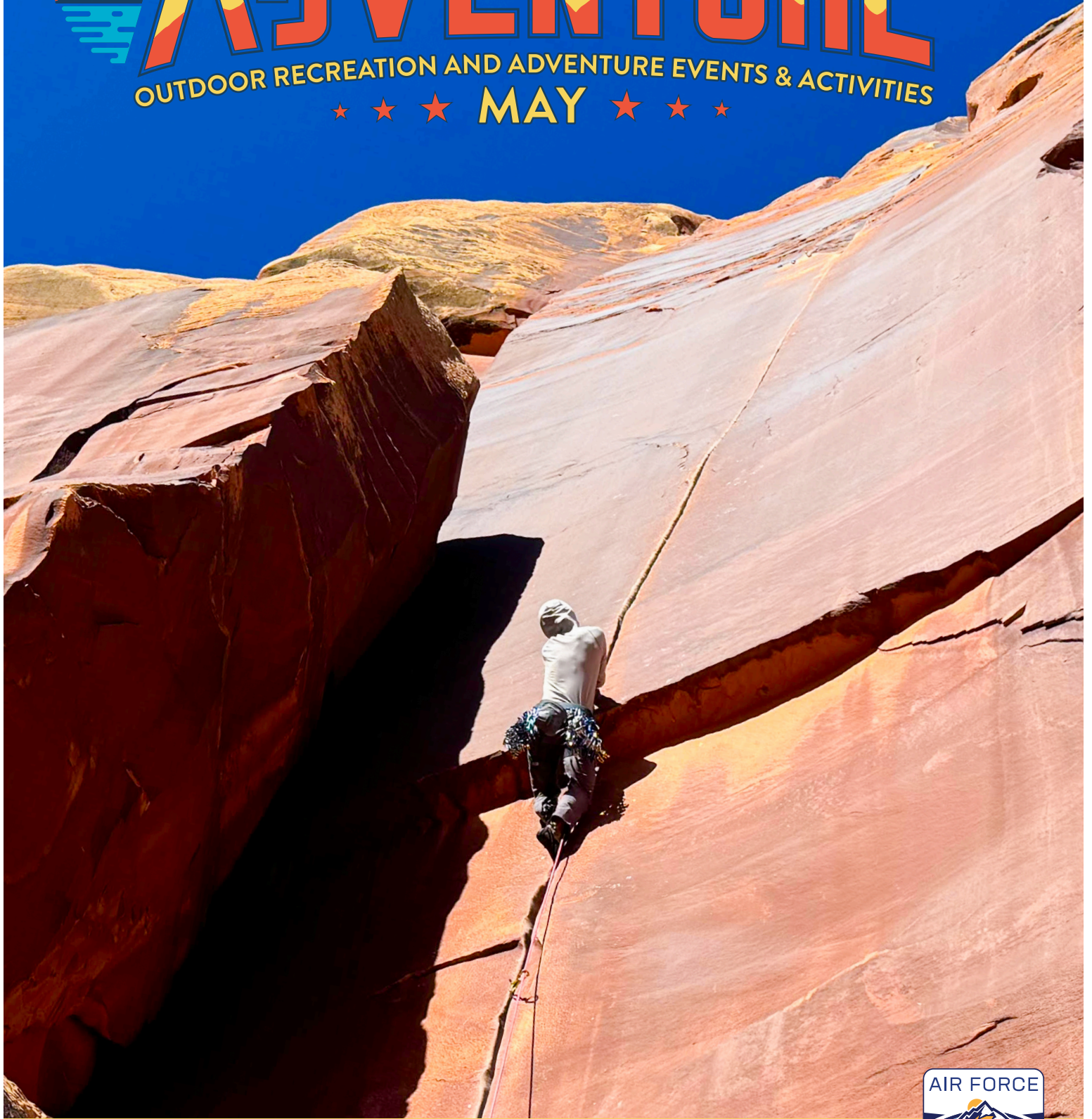




ADVENTURE

OUTDOOR RECREATION AND ADVENTURE EVENTS & ACTIVITIES

★ ★ ★ MAY ★ ★ ★



★ *Book your summer adventures early to ensure you get out into the mountains with us this season!* ★





OUTDOOR ADVENTURE ACTIVITIES

ROCK CLIMBING

BEGINNER ROCK CLIMBING

May 4, 18 | Jun 15, 23 | Jul 13, 20 | 7am – 3pm.

Come learn the basic skills and techniques for this popular Colorado sport. Participants must be 9 years old or older (any minors must be accompanied by an adult). Activity includes transportation, necessary technical gear, and an AMGA Certified Single Pitch Instructor/Rock Guide. \$109/person | R4R \$35/person.

AMGA SINGLE PITCH INSTRUCTOR COURSE AND ASSESSMENT

Course: June 21-23 | Assessment: June 1-2.

Are you interested in learning more about climbing instruction and the professional side of the industry, or wanting to learn some industry “best practice” skills for single pitch climbing with your friends and family? These programs set you up for success with accredited, national level training in the industry professional standard for single pitch rock climbing instruction and skill sets, and are taught by AMGA/IFMGA Licensed Mountain Guides and SPI Providers. The three-day initial course teaches top rope systems managed from above and below, belay and rescue systems, and teaching techniques to help your students thrive in this new skill. The two-day Assessment examines proficiency with these skills and allows the candidate to achieve certification through the American Mountain Guides Association as a Single Pitch Instructor when they pass. Prerequisites are required for entry into both the course and assessment programs. For more information and to sign up, email usafarafting@gmail.com. Custom dates available. Includes instructors, accreditation fees, transportation. Does not include AMGA professional membership required for course/assessment participation.

Course: \$500/person | R4R \$375/person

Assessment: \$450/person | R4R \$250/person

CLIMBING DEVELOPMENT SERIES: GYM TO CRAG

Course 1: June 29-30 & July 6-7.

Course 2: Aug 24-25, 31 & Sep 1.

These separate four-day courses take place over two consecutive weekends with eight hours per day of instruction which is designed to take you through the basics and into more advanced topics. Whether you have some previous experience or are brand new to outdoor rock climbing, this is the course for you. We will focus on specific skills and techniques to improve knowledge base as well as individual learning outcomes for students. Activity includes transportation, necessary technical gear, and an AMGA Certified Single Pitch Instructor/Rock Guide. For ages 12+.

\$500/person | R4R \$275/person.

SUMMIT SISTERS ROCK CLIMBING

Jul 13, 7am–3pm. Ladies of the military, come learn the basic skills and techniques for this popular outdoor sport. This trip is designed for women and will be led by an active duty woman, a certified AMGA Single Pitch Instructor, who is excited to get you all out on this unique and fun adventure! Participants must be 9 years old or older (any minors must be accompanied by an adult). Activity includes transportation, necessary technical gear, and an AMGA Certified Single Pitch Instructor/Rock Guide. \$109/person | R4R \$35/person.

ROCK/ALPINE CLIMBING ON PIKES PEAK

Climb in our very own backyard alpine playground this season on America’s Mountain with our in-house IFMGA American Mountain Guides! As the only MWR program in the DoD with Licensed Mountain Guides, we have the local knowledge and highest-level guides here in-house to take you higher on Pikes Peak. Multi-pitch rock, Intro to Mountaineering and alpine scrambles await this summer for you to experience the magic of the alpine! Email usafarafting@gmail.com to schedule your private day out with us! Prices start at \$139/person and vary based on number of people and objective.

MULTI-PITCH & ADVANCED CLIMBING TRIPS

We teach you how to build climbing anchors, climb longer routes with multiple pitches, place and lead on traditional protection, and most importantly, get you off the ground higher than you have ever been with an AMGA/IFMGA Licensed Mountain Guide. Includes guide, transportation, needed technical gear, and a custom curriculum to suit your desired outcomes. Includes transportation and required equipment. Email usafarafting@gmail.com to schedule your custom trip this season. Prices start at \$129/person and vary by number of people and trip objectives.

PORTABLE CLIMBING TOWER

Email usafaoutdoorrec@gmail.com to schedule a climbing tower program at our FamCamp this summer! This is a great activity to pair with a party, squadron event, or BBQ. Our portable climbing tower can accommodate up to four climbers at a time, stands 35 feet tall, and comes with all the staff and necessary equipment. Schedule a four to six hour day and get all your guests climbing up the tower! For ages 7+ and 50lbs+. Call for availability. \$600/4 hours | \$800/6 hours.

CUSTOM TRIPS

Our AMGA Certified Single Pitch Instructors, Rock Guides and IFMGA Mountain Guides can help you achieve your climbing goals! Whether you are looking to build skills and become self-sufficient, or are wanting to hire a guide to get you up a route you’ve been drooling over, we can get you there! We can guide in many areas of Colorado including Pikes Peak, the South Platte, Garden of the Gods, Rocky Mountain National Park and beyond! We also guide in some of the most coveted climbing destinations such as Devil’s Tower National Monument, Moab, and Indian Creek. Schedule your dream climbing trip with custom inclusions and take advantage of our in-house pros. To build your ultimate adventure this season, email usafarafting@gmail.com.



High Risk Activities Worksheet (AF 4391) is required to participate in ANY high risk activity, for ALL Active Duty Personnel. It is required to be completed by Active Duty Personnel before they participate in most of our Outdoor Adventure Programs and submitted to their Commander. This responsibility lies solely on the Active Duty participant.

For cancellation policy, please see usafasupport.com/outdoor-recreation/

WHITEWATER RAFTING

All trips meet and depart from the east side of the Outdoor Recreation Center at 6:45am and return about 5pm. All rafting trips include transportation from USAFA Outdoor Rec to the Arkansas River and back adding value to your trip. Includes all rafting equipment and required personal gear, lunch, permits, and guides, most of which other companies charge for. Our primary concern is for your safety. All guides are state-certified and hold a First Aid and CPR certification.

ROYAL GORGE FULL DAY CLASS IV-V

Every weekend from May 11–Sep 4.

Our trips always operate on class IV-V whitewater and may include sections of river such as the Royal Gorge and Bighorn Sheep Canyon depending on water levels. This trip is for folks who want to step up the adrenaline and feel the thunder! Not for the meek or weak! Custom dates are available mid-week at the regular price by emailing usafarafting@gmail.com. Ages 16+ and 50lbs+. \$149/person | R4R \$99/person.

BIGHORN FULL DAY CLASS III (IV HIGH WATER)

Every weekend from May 11–Sep 4.

Our family class rafting trips are great for first-timers, groups of varying experience, kids, and family/squadron fun. These trips operate on class III whitewater, and during the early season, sometimes have one or two class IV rapids. Bighorn Sheep Canyon is our primary location for this trip. Custom dates are available mid-week at the regular price by emailing usafarafting@gmail.com.

\$129/Adult | Ages 13+

\$119/Child | Ages 7-12, 50lbs+

R4R \$79/Adult | Ages 13+

R4R \$69/Child | Ages 7-12, 50lbs+

BROWNS CANYON FULL DAY CLASS III (IV HIGH WATER)

With whitewater like our family class rafting trips, Browns Canyon is a more remote feeling stretch of river with awesome scenery. With exciting whitewater rapids such as Big Drop, Raft Ripper, Widowmaker and more, this trip is fun for all ages. Available for private parties of ten or more participants. To schedule your trip, email usafarafting@gmail.com.

\$149/Adult | \$139/Child ages 8+, 50lbs+



ADVENTURE OVERNIGHT TRIP

Jun 22-23. On day one you'll get warmed up on class II-III rapids. Come in to camp and have a hearty dinner made by our staff. Camp out and share stories next to the fire and get ready for the next day of adrenaline filled rapids! Paddle a guided raft down the Royal Gorge! Ages 16+ and 50lbs+.

\$319/person | R4R \$160/person.

DUCKY DAYS

8–3pm. Burn away those hot July and August days on the river in your own inflatable kayak. "Duckies", as we call them, are one of the most fun ways to experience the river without needing a great deal of experience. We will take you to a section with a couple rapids and fun float sections. This is a great way to float away the day! Includes lunch and necessary equipment. Max of eight people. Custom trips available. Email usafarafting@gmail.com to schedule your day! \$119/person, ages 12+.

OVERNIGHT RAFT TRIPS

Overnighters include all rafting gear for both days (helmet, PFD, Wetsuit, splash top), tent, sleeping bag, sleeping pad, two lunches, one dinner and breakfast, and transportation.



KAYAKING

LEARN TO KAYAK POOL SESSION

May 14 | June 11 | July 9 | 8–10pm.

This event is at the Fitness Center pool. Four participant minimum. This course is designed for first-time kayakers to come and learn basic skills, including basic paddle strokes, boat control, balance, and T-rescues. Includes kayak, paddle, and ACA Certified Kayak Instructor. Ages 9+ and 75lbs+. \$35/person.

KAYAK FAST TRACK PROGRAM

To schedule your custom all-inclusive, intensive kayaking instruction trip for you and your group, email usafarafting@gmail.com or call 719-333-2940. Intro to Kayaking class, intro to kayak roll in a pool, a lake session, and Intro River Trip are all included. Includes transportation and all gear. Ages 9+ and 75lbs+. \$299/person. 3-6 participants.

SPLASH DAYS

Schedule your group for a private program! We will bring out all our floatable watercraft, such as our stand-up paddleboards, pedal kayaks, a raft or two, and a few other crafts on Kettle Lakes on base for you to try out and play in the water. We will provide grilled food and refreshments. We will be roaming around for you to request any instruction you may need on any of our floatable equipment. Ages 9+ and 50lbs+ for water activities. Reserve your spot at least 72 hours in advance. \$35/person.



OUTDOOR ADVENTURE ACTIVITIES

BIKING TRIPS

For all Biking Activities: Bikes are available for rent at a discounted rate through Outdoor Rec but must be reserved at least three days prior to the date of the activity.

SHELF ROAD DOWNHILL BIKE RIDE

May 18 | 8am – 5pm. From Cripple Creek to Canon City, this 25-mile-long ride features 580 feet of climbing and 4,657 feet of sweet downhill riding. We will ride past historic mines, dinosaur dig sites, oil well sites, the window rock, a lighthouse, and we may even see some bighorn sheep. The ride is half dirt and half paved roads. Riding on the shelf part of the route could be a bit intimidating to those who do not like heights, but cars drive on it, they just don't have room to pass each other sometimes. Includes transportation, guides and sack lunch. Ages 12+. **\$89/person | R4R \$39/person.**

BIKE DOWN PIKES PEAK

Jun 15 | Jul 5 | 8:30am – 5pm. Get ready to enjoy a 7,000-foot drop in elevation over about 21 miles. Meet at Outdoor Rec, load the bikes, drive up to the summit of Pikes Peak, unload, and take in the view before enjoying the downhill ride of a lifetime. At the end of the ride, we'll stop at Rudy's restaurant before we head home (not included in price). Ages 14+ and at least 4'9". Includes transportation, Pike's Peak entry, guides, and snacks. This is a paved road with vehicle support. **\$99/person | R4R \$49/person.**



PHANTOM CANYON DOWNHILL BIKE RIDE

Jun 1 | 8:30am – 5:30pm. This exciting downhill bike ride through the scenic Phantom Canyon features a 3,713-foot drop in elevation over 23 miles, with zero climbing. Beautiful views, tight canyon walls, and tunnels make this our most popular single-day bike event. Includes transportation, guide, support, and sack lunch/dinner. This is an old narrow gauge railroad line converted to a dirt road with following vehicle support, not single track. Ages 12+. **\$89/person | R4R \$39/person.**

PHANTOM CANYON AT NIGHT DOWNHILL BIKE RIDE

Jun 21 | Jul 19 | 5:30pm – Midnight. This is a great year for full moon, or almost full moon, bike rides down Phantom Canyon! This exciting downhill bike ride through the scenic Phantom Canyon features a 3,713-foot drop in elevation over 23 miles, with zero climbing. Beautiful views, tight canyon walls, and tunnels make this our most popular single-day bike event, but at night under the full moon it is a whole new experience. You will need to bring your own headlight and a mandatory tail light. Includes transportation, guide, support, and sack lunch/dinner. This is an old narrow gauge railroad line converted to a dirt road with following vehicle support, not single track. Ages 12+. **\$89/person | R4R \$39/person.**

TAKE IT OUTSIDE!





OUTDOOR LASER TAG

May 5 | Jun 2 | Jul 6 | Peregrine Pines

FamCamp Laser guns use a harmless invisible infrared beam that shoots 1,000+ feet at the speed of light with zero drop. You are not going to dodge this like you can a paintball! Our field is huge with lots of trees, rocks, bushes, barrels, and pallets to use as cover. We will set up a variety of games that will test your individual skills as well as how well you work together as a team. You can also arrange for a Special Group Arrangement (SGA), perfect for friends and family, units, team building activities, birthdays and more. Call for details. **Ages 9+.** \$15/person, \$225 for a group of 15 or more.

DUTCH OVEN COOKING CLASS

May 17 | Jun 28 | Jul 12 | 5:30–9pm.

Whether you want to learn to cook in a Dutch oven and don't know where to start, or maybe you just want to make some new friends, come join this unique class. Be the envy of the campground, learn proper heat management techniques, and try some great recipes. We will cook up an entire meal, and since the best part is sitting down to eat your work at the end of class, bring your hunger! Class and recipes are planned as if you were camping, so cook times are 30–60 minutes long and ingredients are camp-friendly. Includes Dutch ovens and food. (If you have food allergies or restrictions, we respectfully ask that you avoid this class). \$30/oven, and you can bring one guest for free. Class is limited to 8 ovens, so sign up early.

SPECIAL GROUP ARRANGEMENTS AND CUSTOM TRIPS

If you would like us to put together an activity just for you and your crew, let us know! These are perfect for birthdays, squadron activities, family reunions, church groups, youth groups, sports teams, and more. Outdoor laser tag, rock climbing, biking, rafting or almost any of the many activities we offer can be set up around your schedule (with enough notice of course). One ID cardholder may sponsor up to five guests. Contact your Outdoor Adventure Programmers at usafarafting@gmail.com and let us do the planning!

OAP VOLUNTEERS WANTED

If you are interested in volunteering your time to help us with rafting, biking, climbing, kayaking, hiking, or any other trips we offer, give us a call and we will tell you how to become an official OAP volunteer!



ADULT CPR CLASS

8am–3pm | 30-min. lunch break.

Get your American Red Cross Adult/Child CPR, AED, and First Aid Certification with Certified Red Cross Instructors. We teach Adult/Child CPR, AED and First Aid, rescue breathing, procedures for choking victims and more First Aid training. Our goal is to teach you the skills so that in the event of an emergency you will have the skills and confidence to assist someone in need. Certification is good for two years and is only five-person minimum, ten-person maximum. **This is not a babysitter course, must be 18+.** \$75/person. Call for dates.

AMERICAN RED CROSS ADULT/CHILD CPR, AED, & FIRST AID RECERTIFICATION

Recertify your American Red Cross Adult/Child CPR, AED, and First Aid. This is a hybrid recertification course that includes a three-hour online training and a two-hour in-person skills test. Online training link will be sent to you one week prior to the scheduled skills test and must be completed before attending the skills class. Registration will close one week prior to the scheduled skills test. You must provide proof of previous certification and not exceed expiration of certification by more than 30 days. Contact ODR for more information at 719-333-4475. **This is not a babysitter course, must be 18+.** \$50/person.



INTERESTED IN ROCK CLIMBING?



Outdoor Adventure Programs has you covered. We offer many different climbing trips that suite any skill level.

CALL 719-333-4475 TO RESERVE YOUR SPOT!

BEGINNER ROCK CLIMBING
MULTI-PITCH AND ADVANCED CLIMBING
DEVIL'S TOWER NATIONAL MONUMENT
ROCK CLIMBING WEEKEND TRIPS
MOAB CRACK CLIMBING
ROCK/ALPINE CLIMBING ON PIKES PEAK
AMGA CERTIFIED SINGLE PITCH
INSTRUCTOR/ROCK GUIDE
PORTABLE CLIMBING TOWER
SUMMIT SISTERS ROCK CLIMBING

OUTDOOR RECREATION & FAMCAMP



MAY MONTHLY SPECIALS

RETAIL SPECIAL
15% OFF Fishing Gear

RENTAL SPECIAL
\$5 OFF Weekend Camping
Equipment Rental (2-night min)

GENERAL INFO

May 4 | Volksmarch

May 5 | Cinco De Mayo

May 12 | Mother's Day

May 27 | Memorial Day | ODR/ITT closed

May 30 | Cadet Graduation

COMMUNITY GARDEN PLOTS

Plots are available in Pine & Doug Valley for Housing/Dorm Residents. Garden Plot use begins May 10 and ends Oct 10. Garden Plots will be issued by lottery for new users. Last year's users will be grandfathered but must contact Outdoor Rec to notify us of your intent to stay by May 1 or the spot will be offered to new gardeners. If you are interested in being entered into the drawing, please contact ODR at 719-333-4475. **\$50/plot.**



EQUIPMENT RENTAL RESERVATION POLICY

(high-demand equipment other than campers)

CAMPERS AVAILABLE STARTING MAY 10!
(Weather dependent)

Active Duty may reserve 90 days in advance of rental. All other eligible ID card holders may reserve 60 days in advance of rental.

USAFA Picnic Pavilions at Peregrine Pines are available to reserve May-Sep! \$65/day.

Go to usafasupport.com/outdoor-recreation/ for equipment information and prices. Reservations are paid for in full at time of reservation.

CANCELLATION FEES:

Full payment is required at time of reservation. A 10% Cancellation Fee will be charged for cancellations up to 10 calendar days prior to reservation pick up date. **NO REFUND for cancellations within 10 calendar days of pickup date.** Exceptions only for documented military or medical reasons.



FAMCAMP NOW OPEN!

SUMMER HOURS:

April 1-16 | Sun-Sat | 9am-3pm

April 17-30 | Sun-Sat | 9am-5pm

Starting May 1 | Sun-Thu | 9am-6pm
Fri-Sat | 9am-8pm

**SUMMER RV SITE RATES FOR
DoD ID CARDHOLDERS:**

(effective through Oct 31)

\$39/night | Rigs 27' and smaller

\$44/night | Rigs larger than 27'

SPONSORED NON-DoD GUESTS
(Max stay 14 nights per year)

\$44/night | Rigs 27' and smaller

\$49/night | Rigs larger than 27'

TENT SITES (Maximum stay in tent sites is 14 nights per year).

\$18/night | DoD ID cardholders

\$23/night | Non-DoD Sponsored guests

Reminder – IAW AFI 34-101, FamCamp guests may stay a total of 180 days per calendar year.



RECHARGE FOR RESILIENCY (R4R) PROGRAMS

RecOn: Air Force and Space Force Active Duty, Reserve, Guard personnel and their valid ID family members. These programs are specifically high adrenaline supervised by ODR.

Single Airman Program (SAPI): Air Force and Space Force Active Duty, Reserve, and Guard officer or enlisted without a spouse. *Note: new this year SAPI eligible may sponsor one guest at the R4R price.*

Deployed Affected (DAP): Deployed affected Air Force and Space Force Active Duty, Reserve, Guard personnel and their family members. The deployed service member and their family are eligible upon receiving official orders during the deployment and up to 1 year after the service member returns to the home station. *Note: new this year DAP eligible families may sponsor one guest at the R4R price.*

Outdoor Rec is offering several programs throughout the year that qualify for R4R pricing including snowmobiling, dogsledding, indoor and outdoor rock climbing, rafting, golf, bowling, and arts and crafts. Please go to usafasupport.com for dates and details, and call 719-333-4753 for more information. For R4R discount, trip enrollment must be in person with ID card present.

ELIGIBILITY: *The Recharge for Resiliency (R4R) initiative is directed specifically toward the Active Duty and Reserve members to include their families at each base. Unfortunately this means that retirees, civilians and foreign military are NOT eligible for R4R discounted rates. Other branches of the US military are not eligible unless they are part of an Air Force led joint-based scenario, or are permanently assigned to an Air Force base. Even then, they are only eligible at the Air Force Base in which they are assigned.*

RESERVATION/ CANCELLATION POLICY

FamCamp reservations for the 2024 summer season can be made 90 days in advance by active duty personnel, 60 days in advance by retirees, DoD civilians, VHIC and all other eligible users.

Cadets/Prep school students are authorized to make reservations a year in advance for visiting family for Graduation and Parents Weekend.

AOG Members are authorized to make reservations a year in advance for alumni events. (These guests must be an AOG member with ID card or sponsored by AOG). Contractors are NOT eligible to stay at FamCamp.

Call 719-333-4980 to make reservations.



FARISH RECREATION AREA

FARISH RECREATION AREA

FARISH is CLOSED for the winter, tentatively reopening May 3. Once open, office hours are daily from 8am – 6pm.

Reservations Policy: 90 days in advance only for active duty personnel and 60 days in advance for all other eligible users. Customers are authorized to make reservations a year in advance for large events that require at least 50% of all indoor lodging. These groups are only authorized to make reservations during non-peak months (May, Aug, Sept, Oct) and will only be scheduled Sundays to Thursdays (no weekends). All weekends and the months of June and July are for the resiliency of individual families. For more information, call 719-687-9098.

SUMMER RATES

\$10/vehicle | Day-use patrons

\$400/day | Multipurpose building, *call for details.*

\$400 First day, \$200/additional day. Day use only, max of 75 people and parking for 15 vehicles with a \$10/additional fee per vehicle. Loft, tables, chairs, projector, screen and full kitchen with two refrigerators.

\$60-\$110/day | Main pavilion, day use only.

\$60/day, up to 25 guests

\$110/day, up to 75 guests

Includes parking for a 30 vehicles.

\$10/additional vehicle.

MAY-OCT LODGING RATES

\$200/night | **The Cottage**

Sleeps eight, with two bedrooms, kitchen, bath and sheets provided.

Bring pillows and blankets.

\$145/night | **Duplexes**

Six units total, each unit sleeps five microwave stove-top (no oven).

Two units with two bedrooms are pet friendly for a \$25 fee/night.

Four units w/one bedroom with loft

Sheets provided, bring your own pillows and blankets.

\$65-\$90/night | **The Lodge** | **Four rooms**

\$90 Room One - Sleeps five with private bath

\$65 Room Two - sleeps four

\$75 Room Three - sleeps four

\$65 Room Four - two rooms, sleeps four

Rooms two, three and four have a shared hallway bathroom. All rooms have cookware and access to a shared kitchen.

Sheets provided, bring your own pillows and blankets.

\$140/night | **Grace Lake Barn**

Available for overnight use, sleeps twelve in open bay. Covered outdoor pavilion with electricity, indoor refrigerator and microwave.

\$50-\$65/night | Camper Cabins

\$55 Cabins 1 and 2 - sleeps four, with electricity

\$50 Cabins 3-5 and 7-8 - sleeps four, without electricity

\$65 Cabin 6 - sleeps eight, without electricity

\$65 Cabin 9 - sleeps eight, without electricity

All cabins require renter to bring sheets, pillows and blankets.

\$25/night | Campsites

Six-person maximum and two vehicles per campsite. Each site has a picnic table and firepit. Sites 26, 30, 31, 32 have a max space for a 15' trailer/camper. Sites 27 & 29 can't accommodate any size campers. Lake Leo sites are lake front walk-in sites (*vehicles must be parked in adjacent parking lot*).

\$25-\$40/day | RV Sites

\$25/day Hill Top One - No electric, accommodates up to a 32' rv/camper.

\$40/day Pavilion Three -15 amp electric hook-up, accommodates up to 20' rv/camper.

\$40/day Pavilion Four -15 amp electric hook-up, accommodates up to 40' rv/camper

\$40/day Pavilion Five -15 amp electric hook-up, accommodates up to 32' rv/camper



EQUESTRIAN CENTER

GUIDED GROUP TRAIL RIDES

Join us for guided group trail rides by reservation only. For the schedule and to sign up, please call 719-333-4607 or please visit our webpage at usafasupport.com/equestrian-center/ to sign up online. This is an excellent way for beginners to gain riding experience and for seasoned riders to learn the trails!

1-hour guided rides \$65/person, add \$10/guest for non-DoD cardholders.

2-hour guided rides \$115/person, add \$10/guest for non-DoD cardholders.

Visit usafasupport.com/equestrian-center/ to sign up online or call 719-333-4607.

MOONLIGHT GUIDED GROUP TRAIL RIDES

Join us for a moonlit guided ride at 9pm under the full moon through our pastures and trails.

May 23 | Flower Moon Moonlight Ride

June 20 | Strawberry Moon Moonlight Ride

1-hour guided rides \$80/person, add \$10 per guest for non-DOD cardholders.

HOLIDAY HAYRIDES

May 12 | Mother's Day

June 16 | Father's Day

30-minute hayride \$10/person

Ride through the Equestrian Center and surrounding pastures. Visit our website at usafasupport.com/equestrian-center/ to sign up online or call 719-333-4607.

GROUP/SPECIAL EVENTS

Call us at 719-333-4607 to schedule group and special events!

HORSE RENTALS FOR PHOTOS

Rent a horse or mini horse to use in individual or family photos at the Stables **\$25/30 minutes.**

(Call 719-333-4607 to reserve your spot.)

SUMMER CAMPS

Summer camps start in June! For information and registration, call 719-333-4607

LEAD LINES/MINI HORSES

Rent a horse and help your child gain experience as you lead them around on the horse! Lead lines are for children ages six-twelve. Children under age six may rent one of our mini horses to groom/lead, with a parent (no riding). By reservation only, call 719-333-4607. **\$25/30 minutes.**

TRAILER-INS

Did you know you can trailer your own horse in to ride on our trails? Call 719-333-4607 for more information.

Daily Fee \$10 (via drop box).

Yearly Pass \$120 (at rental office).

HORSE BOARDING

Eligible patrons may board their horse(s) at the Equestrian Center! Many boarding options are available for eligible ID cardholders. For pricing and details, call 719-333-2294.

UNITE PROGRAM

Have Unite Funds you need to spend? Come down to the Equestrian Center! For more info, call 719-333-4037.

2024 TRAVEL TRAILER RENTALS



TRAVEL TRAILER RENTAL PRICES *MID-MAY - END OF SEPTEMBER

Prices:	Per Night	Fri-Mon	Holiday Weekend	Weekly
10' Tent Trailer	\$75	\$150	\$225	\$375
16' Scamp	\$100	\$200	\$300	\$500
20' Escape	\$125	\$250	\$375	\$625
23' Escape	\$150	\$300	\$450	\$750

* Generator or Solar Panel highly recommended if site doesn't have electrical hook up. Generator will charge the battery and run 120V including outlets, air conditioning and/or microwave. Solar panel will only charge the battery which powers 12V operations, no a/c, outlets or microwave. Generators and solar panels are half price with camper rental.

RESERVATION POLICIES:

Active duty may reserve up to 90 days prior to pick up date. All other eligible ID card holders may reserve equipment 60 days in advance of pickup.

CANCELLATION POLICY:

Full payment is required at time of reservation. There is a 10% cancellation fee will be charged for cancellations up to 10 calendar days prior to reservation pick up date. No refund for cancellations within 10 calendar days of pickup date. Exceptions only for documented military or medical reasons.

USAFA CAMPING FACILITIES

Peregrine Pines (USAFA) 719-333-4980

Farish Rec Area (Woodland Park) 719-687-9098

Take it Outside
WITH OUTDOOR RECREATION CENTER RENTALS

16' SCAMP

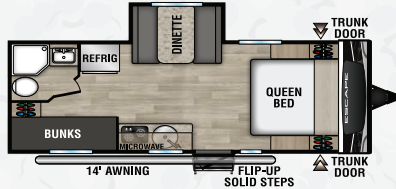
SIDE SLIDE - REQUIRED: ODR TRAVEL TRAILER CLASS, CLASS III 2" RECEIVER BALL, TOW CAPACITY 3,000LBS AND NO REQUIRED ELECTRONIC BREAK CONTROLLER.



MGVW 3,500LBS
 DRY WEIGHT 2,758LBS
 CARGO MAX 742LBS
 INTERIOR HEIGHT 6'3"
 TABLE CONVERTS TO BED,
 SOFA CONVERTS TO BUNK BEDS
 REFRIGERATOR • SINK • PROPANE
 STOVE TOP • MICROWAVE
 AIR CONDITIONING & HEATING
 NO BATHROOM
 12GAL FRESH WATER TANK
 2 PROPANE TANKS

20' ESCAPE

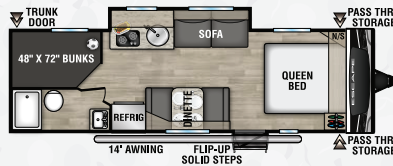
SIDE SLIDE - REQUIRED: ODR TRAVEL TRAILER CLASS, CLASS III RECEIVER, TOW CAPACITY 4,500LBS AND HAVE A INSTALLED ELECTRONIC BRAKE CONTROLLER



MGVW 4,000LBS
 DRY WEIGHT 2,915LBS
 TONGUE WEIGHT 340LBS
 QUEEN BED • TWO TWIN BUNKS
 (DINETTE CONVERTS TO TWIN BEDS)
 AC/DC POWER
 DUAL OPERATING REFRIGERATOR
 PROPANE STOVE • MICROWAVE
 PROPANE HEAT • AIR CONDITIONING
 SINK • SHOWER • TOILET
 HOLDING TANKS
 20GAL FRESH WATER • 30GAL BLACK WATER

23' ESCAPE

SIDE SLIDE - REQUIRED: ODR TRAVEL TRAILER CLASS, CLASS III RECEIVER, TOW CAPACITY 5,000LBS AND HAVE A INSTALLED ELECTRONIC BRAKE CONTROLLER



MGVW 4,245LBS
 DRY WEIGHT 3,470LBS
 TONGUE WEIGHT 540LBS
 QUEEN BED • TWO FULL BUNKS
 (DINETTE AND SOFA CONVERTS TO TWIN BEDS)
 AC/DC POWER
 DUAL OPERATING REFRIGERATOR
 PROPANE STOVE • OVEN • MICROWAVE
 PROPANE HEAT • AIR CONDITIONING
 SINK • SHOWER • TOILET
 HOLDING TANKS
 20GAL FRESH WATER • 30GAL BLACK WATER

10' TEPUI AYER 2 TENT AND TRAILER

REQUIRED: ODR TRAVEL TRAILER CLASS, CLASS III RECEIVER



DRY WEIGHT 600LBS
 OFF ROAD TRAILER
 WITH A THULE AYER 2
 CARTOP TENT
 SLEEPS TWO



INFORMATION, TICKETS & TRAVEL

Planning a vacation?

Whether you are traveling within Colorado or across the US to your dream destination, USAFA ITT can help arrange your lodging!

From the mountains to the beaches and anywhere in between we've got you covered.

Let us book your summer vacation or Disney Cruise today by calling us at 719-333-7367.



IN-STATE TICKETS

iFly

2-Flight Voucher \$67.99

Family & Friends Pack \$320

(up to 5 people)

Boondocks

(Parker & Northglenn locations)

4-hours of play \$32

Overdrive Raceway

3-Race Ticket \$49

Denver Aquarium

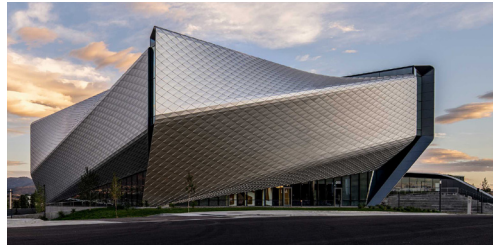
Adult (12+) \$17, Child (3-11) \$10.50

Dinosaur Resource Center

Adult (13+) \$12.50, Child (5-12) \$8.50

US Olympic & Paralympic Museum

Adult (13+) \$16.95, Child (3-12) \$11.95



ADDITIONAL IN-STATE TICKETS

(Pre-order tickets must be purchase though ITT)

Royal Gorge Railroad

Coach Adult (13+) \$83 | Child (2-12) \$76

Deluxe Adult (13+) \$110 | Child (2-12) \$105

Vista Dome Adult (13+) \$110 | Child (2-12) \$105

The Edge Ziplines and Adventures

Epic Sky Trek starting at \$48 (4 treks available)

Zipline Tours starting at \$85 (10 tours available)

Ticket pricing subject to change without notice.

Additional discounted tickets are available

for other out-of-state attractions! Call ITT at

719-333-7367 for information and pricing.

COLORADO EVENTS

APRIL

1-5 | Canyon City Music & Blossom Festival

4-5 | Cinco de Mayo Festival, Denver

17 | Monte Vista 3rd Friday Art Walk

18-19 | Chalk Vines & Lines, Aurora

23-27 | Mountainfilm In Telluride

24-26 | Iron Horse Bicycle Classic

24-27 | Grand Old West Days

26-28 | Colorado Springs Home Show

31 - June 2 | Telluride Balloon Festival

All Dates subject to change.

OUT-OF-STATE TICKETS

2024 Disney World Salute Tickets

4-Day Park Hopper \$369

4-Day Park Hopper Plus \$399

5-Day Park Hopper \$389

5-Day Park Hopper Plus \$419

6-Day Park Hopper \$409

6-Day Park Hopper Plus \$439

Valid through 12/20/24. Eligibility restrictions apply. Blackout dates may apply.

2024 Disneyland Salute Tickets

3-Day Park Hopper \$264

3-Day Park Hopper Genie+ \$352

4-Day Park Hopper \$309

4-Day Park Hopper Genie+ \$427

Valid through 12/13/24. Eligibility restrictions apply. Blackout dates may apply.

2024 Universal Orlando Freedom Passes

2-Park Park-to-Park Adult (10+) \$210

Child (3-9) \$205

3-Park Park-to-Park Adult (10+) \$245

Child (3-9) \$240



Are you in need of a rental car?



CHOOSE ENTERPRISE OR HERTZ,
BOTH OFFER EXCELLENT BENEFITS!



2024 - 2025

DENVER

BRONCOS

SEASON

TICKET

LOTTERY

ENTRIES ACCEPTED

MAY 1 - 31

ONE ENTRY PER HOUSEHOLD

NO EXCEPTIONS

DoD CARDHOLDERS ONLY

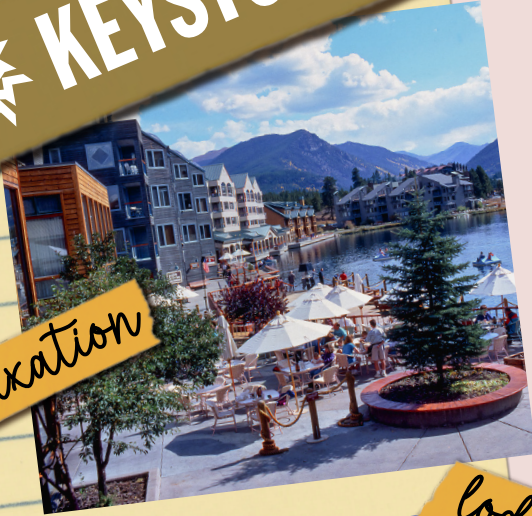
DRAWING WILL BE HELD

THE FIRST WEEK OF JUNE

CALL ODR FOR MORE INFO

719-333-4475

KEYSTONE



relaxation



lodging

GREAT
PRICES
JUST FOR
You!



fun

MAKING MEMORIES!

An ultimate family
spring vacataion
through
Rocky Mountain Blue
at Keystone Resorts

THE ROCKY MOUNTAIN BLUE AIR FORCE partnership with Keystone Resorts in Colorado offers the military the best in lodging, recreation, conferences and reunions.

RMB WELCOMES

personnel from Air Force, Army, Navy, Marines, Coast Guard, Reserves, National Guard, DoD employees, retired military, immediate family members and their guests.



Book now!

CALL TOLL FREE 866.768.2583

Visit usafasupport.com/rocky-mountain-blue/

or call



4 DAYS RAFTING ON THE LOWER GRAND CANYON



MAY 23-27

R4R \$800/PERSON
— \$1,800 REGULAR PRICE —



TRIP INCLUDES:

- Professional Guides
- Transportation & Lodging
- Camping Equipment
- Personal Gear Dry Bag
- Food, Coffee & Water

Don't miss this once in a lifetime trip

4 days of rafting the Diamond Down in the lower Grand Canyon! We will cover 54-miles of river between Diamond Creek and Pearce Ferry. Come join us as we experience adrenaline-filled rapids, breathtaking scenery, unique hikes featuring exciting new terrain and a stunning waterfall, camping on sandy beaches beneath the stars, and share camp-side cooked meals.